

## Installation advice

# RECYFIX POINT

### General

Our installation advice and installation examples are generally valid suggestions and are based on many years of experience and extensive testing. We reserve the right to make changes in the course of technical progress and operational development. They do not release the planner from specifying the drainage system and the type of installation, taking into account the local conditions. The valid technical regulations and guidelines as well as the state of the art must be taken into account.

Before installation, the RECYFIX products must be stored away from heat (e.g. from direct sunlight).

The corresponding installation examples on the HAURATON website must be observed.

### Installation

The sub-structure must be load-bearing, frost-proof and settlement-free in accordance with the planner's specifications.

The point inlet is equipped with optional inlets ('Einlauf/Inlet') on 3 sides and an outlet ('Auslauf/Outlet') on the fourth side. The markings must be observed here.

When using the insert frame, the sludge trap bucket must be removed for the duration of the installation. In addition, for bolted gratings, the rubber nuts must be moved from the bolting points of the point inlet to those of the insert frame.

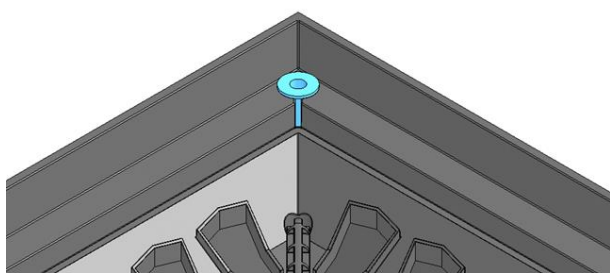


Fig.: Rubber nut

The insert frame must be connected to the point inlet. To do this, drill two holes in the centre of each of the four sides below the frame and pass a cable tie through them.

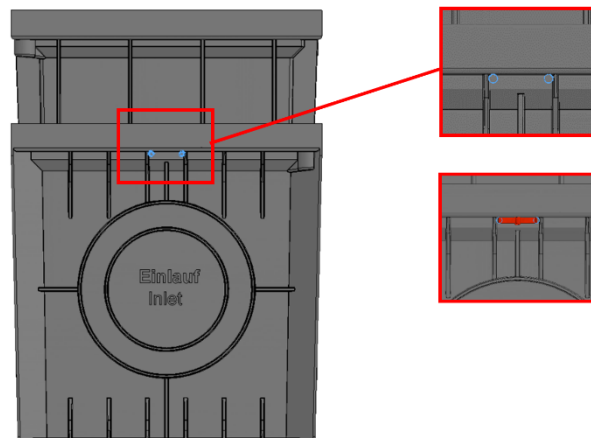


Fig.: Position of the fastening by means of cable ties

During installation, the gratings must be inserted to reinforce the point inlet and must be protected from debris by masking or the like.

Driving over them during the construction phase is not permitted.

It must be ensured that the subsequent surface coverings permanently overhang the upper edge of the point inlet as per the installation example.

The specified load class is only achieved after installation with inserted gratings has been completed.

Any debris on site must be removed after installation is complete.

### Joints

To compensate for horizontal forces (e.g. due to thermal expansion), sufficiently dimensioned expansion joints must be arranged in the longitudinal and transverse direction of the point inlet.

Further joints, depending on the surface covering, are specified in the installation examples.

### Sealants and adhesives

The sealant and adhesive recommended by HAURATON with corresponding instructions can be found on the product page under accessories. The use of other brands is at your own risk.

### Locking options

Screw-on covers: tighten with 2 turns after applying the bolts

Note: Our information corresponds to our current knowledge and experience to the best of our knowledge. We reserve the right to make changes in the course of technical progress and further operational development. The user is not released from a careful examination of the functions or application possibilities of the products by qualified personnel. The mention of trade

names is not a recommendation and does not exclude the use of other similarly tested products. Further information can be found in the respective safety data sheet, or in the areas of application, e.g. for elastic spray seals. In the case of new editions, older editions lose their validity.