

## Installation advice

# Slotted channels

### General

Our installation advice and installation examples are generally valid suggestions and are based on many years of experience and extensive testing. We reserve the right to make changes in the course of technical progress and operational development. They do not release the planner from specifying the drainage system and the type of installation, taking into account the local conditions. The valid technical regulations and guidelines as well as the state of the art must be taken into account.

The installation advice also apply to the system components of the channels (e.g. sump unit and access cover), unless explained separately.

Before installation, the RECYFIX products must be stored away from heat (e.g. from direct sunlight).

The corresponding installation examples on the HAURATON website must be observed.

Further information on the processing of drainage systems can be found on the HAURATON YouTube channel.

### Installation

The sub-structure must be load-bearing, frost-proof and settlement-free in accordance with the planner's specifications.

The installation of the channels starts at the lowest point or at the transition to the base pipe (drain element or sump unit) and is carried out against the direction of flow.

During installation, the gratings must be protected from debris by masking or the like.

For channel openings made on site (e.g. for T and L connections of channels), please note that the load that can be absorbed is significantly reduced and the specified load class is no longer achieved.

Driving over them during the construction phase is not permitted.

It must be ensured that the subsequent surface coverings permanently overhang the upper edge of the slot according to the installation example.

The specified load class is only achieved after installation is complete. The inserted paveable cover of the access element must be filled with load-bearing surface covering for this purpose.

Any debris on site must be removed after installation is complete.

### The following also applies to FASERFIX channels:

The installation aids offered by HAURATON must be used to lift the channels. Alternatively, suitable harnesses can be used.

Lifting from the grating or the bolt connection points is not permitted.

In the case of channels with a fall, the order of the channel types and the direction of flow must be observed. These are marked on the front sides, which are aligned in the direction of the sump unit (descending numbering).

### The following also applies to RECYFIX channels:

The channels are to be set using overlapping tongue and groove joints. The channel joint can be sealed here if necessary. Corresponding instructions on sealants and adhesives must be observed.

The direction of flow is indicated by an arrow on the channels.

When connecting pipes to the channel, please note that the length of the preformed PVC-U socket is not sufficient for adequate fixing and sealing of the connection. In this case, a shortened PVC-U bend (see system components) should be used as an adaptor and the connected pipe should be secured and sealed accordingly.

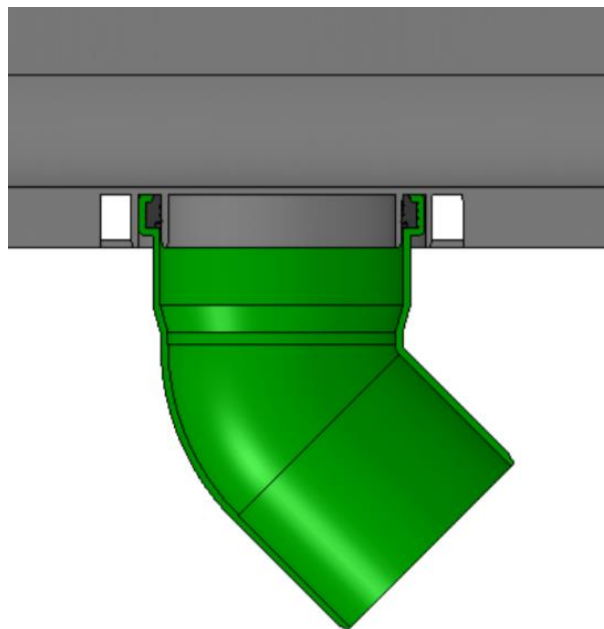


Fig.: Connection with shortened pipe fitting

### Joints

To compensate for horizontal forces (e.g. due to thermal expansion), sufficiently dimensioned expansion joints must

be arranged in the longitudinal and transverse direction of the channels.

Joints running transversely to the channel run are to be led through a channel joint.

Joints running lengthwise to the channel run are to be arranged at a specified distance from the channel run as shown in the installation example.

Further joints, depending on the surface covering, are specified in the installation examples.

## Sealants and adhesives

The sealant and adhesive recommended by HAURATON with corresponding instructions can be found on the product page under accessories. The use of other brands is at your own risk.

Note: Our information corresponds to our current knowledge and experience to the best of our knowledge. We reserve the right to make changes in the course of technical progress and further operational development. The user is not released from a careful examination of the functions or application possibilities of the products by qualified personnel. The mention of trade names is not a recommendation and does not exclude the use of other similarly tested products. Further information can be found in the respective safety data sheet, or in the areas of application, e.g. for elastic spray seals. In the case of new editions, older editions lose their validity.