

## Installation advice

# RECYFIX PRO

### General

Our installation advice and installation examples are generally valid suggestions and are based on many years of experience and extensive testing. We reserve the right to make changes in the course of technical progress and operational development. They do not release the planner from specifying the drainage system and the type of installation, taking into account the local conditions. The valid technical regulations and guidelines as well as the state of the art must be taken into account.

The installation advice also apply to the system components of the channels (e.g. sump units), unless explained separately.

Before installation, the RECYFIX products must be stored away from heat (e.g. from direct sunlight).

The corresponding installation examples on the HAURATON website must be observed.

Further information on the processing of drainage systems can be found on the HAURATON YouTube channel.

### Installation

The sub-structure must be load-bearing, frost-proof and settlement-free in accordance with the planner's specifications.

The installation of the channels starts at the lowest point or at the transition to the base pipe (drain element or sump unit) and is carried out against the direction of flow.

This is marked by arrows on the channel.

The channels are to be set using overlapping tongue and groove joints. The channel joint can be sealed here if necessary. Corresponding instructions on sealants and adhesives must be observed.

When connecting pipes to the channel, please note that the length of the preformed PVC-U socket is not sufficient for adequate fixing and sealing of the connection. In this case, a shortened PVC-U bend (see system components) should be used as an adaptor and the connected pipe should be secured and sealed accordingly.

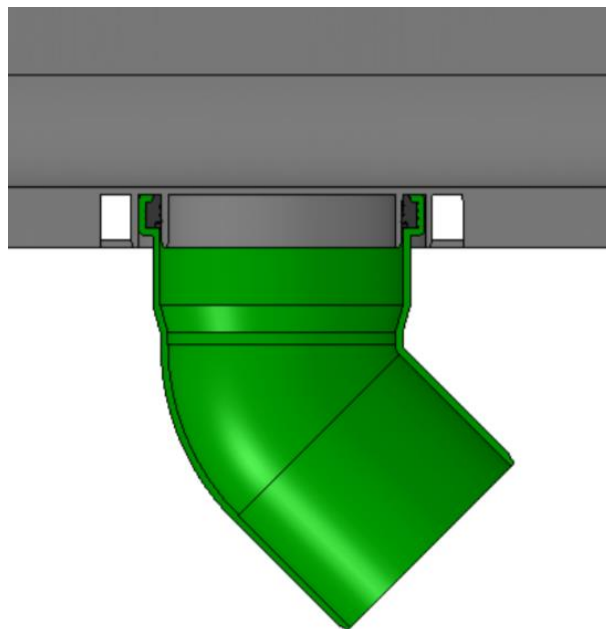


Fig.: Connection with shortened pipe fitting

During installation, the gratings must be inserted to reinforce the channels and must be protected from debris by masking or the like.

In the case of longitudinal and mitre cuts made on site, ensure that sufficient fixing points of the grating remain intact.

For channel openings made on site (e.g. for T and L connections of channels), please note that the load that can be absorbed is significantly reduced and the specified load class is no longer achieved.

Driving over them during the construction phase is not permitted.

It must be ensured that the subsequent surface coverings permanently overhang the upper edge of the channel as per the installation example.

The specified load class is only achieved after installation with inserted gratings has been completed.

Any debris on site must be removed after installation is complete.

### Joints

To compensate for horizontal forces (e.g. due to thermal expansion), sufficiently dimensioned expansion joints must be arranged in the longitudinal and transverse direction of the channels.

Joints running transversely to the channel run are to be led through a channel joint.

Joints running lengthwise to the channel run are to be arranged at a specified distance from the channel run as shown in the installation example.

Further joints, depending on the surface covering, are specified in the installation examples.

### Sealants and adhesives

The sealant and adhesive recommended by HAURATON with corresponding instructions can be found on the product page under accessories. The use of other brands is at your own risk.

### Locking options

When bolting the gratings, do not exceed the following maximum turns:

Plastic locking handle bolt connection: tighten with 3 turns after putting on the bolt

Steel locking handle bolt connection: after applying the bolt, tighten with 2.5 turns

Note: Our information corresponds to our current knowledge and experience to the best of our knowledge. We reserve the right to make changes in the course of technical progress and further operational development. The user is not released from a careful examination of the functions or application possibilities of the products by qualified personnel. The mention of trade names is not a recommendation and does not exclude the use of other similarly tested products. Further information can be found in the respective safety data sheet, or in the areas of application, e.g. for elastic spray seals. In the case of new editions, older editions lose their validity.